

Inhalt

Joint water-drawing (2003)

Water-places (2004)

Riverbed-sleeping (2004)

The Danube flows into the Nile (2008)

Ice-pyramid in the Egyptian desert (2009)

The Big Dipper (2009)

The drawing of the Zambesi River (2009)

Wandelweiser 2009

Art Production

“Die Station”

Biography



River to River

- Water-places
- Riverbed-sleeping
- Water-drawing at the Danube's source
- Immortal Iceman
- River TV



Installation within the „River to River“ project
 September 2004
 Station Neufelden

Made from 60 marking poles which were used as markings of the "water-drawing places", photos of these 60 places as well as 60 buckets filled with water from the river "Große Mühl".



River to River

The „River to River - project “ is a long term project which connects rivers and people from different cultures by means of jointly handling water. It is a series of social impulses of creation which are realised in the spirit and terms of Joseph Beuy's social sculpture.

We all are creatures and creators of this world. We "draw" the world and therefore jointly "water-drawing and - flowing" actions along rivers form the basis of the "River to River - project". (The linguistic basis is the homonym of "Schöpfer" in German which means creator and scoop at the same time. The English expression "drawing" will henceforth be used to express the technical as well as the creative process of bailing water).

While jointly acting together rivers of all continents are being grasped as creatures together with their residents by drawing water from them. In this process, waters, people and cultures are being connected by overcoming geographic and cultural borders. The creativity of the involved people uses the connecting power of rivers and cultures to draw and anticipate a common future into the present by means of human action.

Rivers are creatures, the essence of life and therefore essentially shape the origin and development of human cultures along their riverbanks. All rivers of the world are connected and form a self-contained global water-cycle. The waters of rivers, lakes and oceans merge, exchange and connect constantly.

On the other hand the „River to River - project" is based on the fact that water is the basis of every human interaction. Without a joint management of water supply, without the interaction connected to the common reference water, human settlements and development would not have been possible.

The series „River to River" sheds light on the relationship of people and these lifelines along which humans spend their lives. By remembering jointly and raising the awareness of old and traditional water rituals, a community creating power is gained from the energy of rivers. This energy is used in favour of the community of men.



River to River

- Water-places
- Riverbed-sleeping
- Water-drawing at the Danube's source
- Immortal Iceman
- River TV



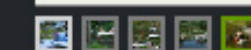
Campaign and temporary sculpture at the river „Große Mühl“
 September 2004
 Neufelden

Installation of 60 steel beds in the river bed of the "Große Mühl" below the dam. Joint investigation of life in the river and overnight stay in the river bed.

Art as social organism

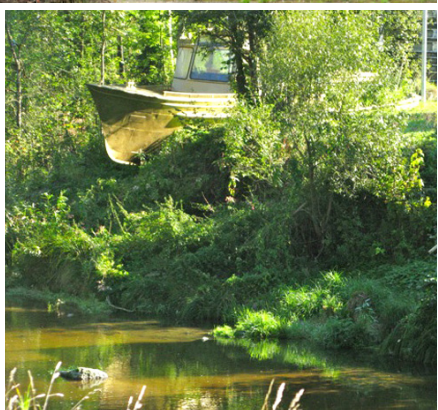
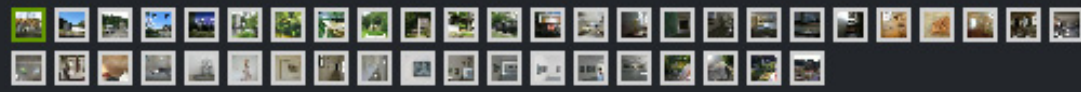
One problem of our time is the lacking feeling of connection with the people living in former times and those who will live in the future. The achievement and prosperity oriented single-society expresses this kind of reality. Art is able to convey to take a closer look, to remember and look ahead. It can connect people in their perception and encourage action. Art changes the world. It develops visions and perspectives, approaches and values and often anticipates them in its creations. New social realities are being created by this. Art is only effective in our social practice when we succeed to create social organisms. That's what we call "social sculptures". Over 500 people took part in the project "Joint water-drawing" and "Riverbed-sleeping" at the "Große Mühl" in 2003/04 and thus contributed actively to realise a "social watercolour". A social reality has been created with the visionary power and the connecting energy of common pictures. This reality influenced the real conditions and affected them constructively. The "Joint water-drawing" and the "Riverbed-Sleeping" made a major contribution to the fact that as of the 1st of January 2005 - after over 80 years - the amount of residual water of the "Große Mühl" below the dam is being raised to 300l/s (30 times more than before). This resolution was made by the Energie AG voluntarily and in a mutual agreement with the state government of Upper Austria to revive the riverbed of the "Große Mühl" in its lower course up to the mouth. This now takes the needs of nature and population into account.

-Joachim Eckl



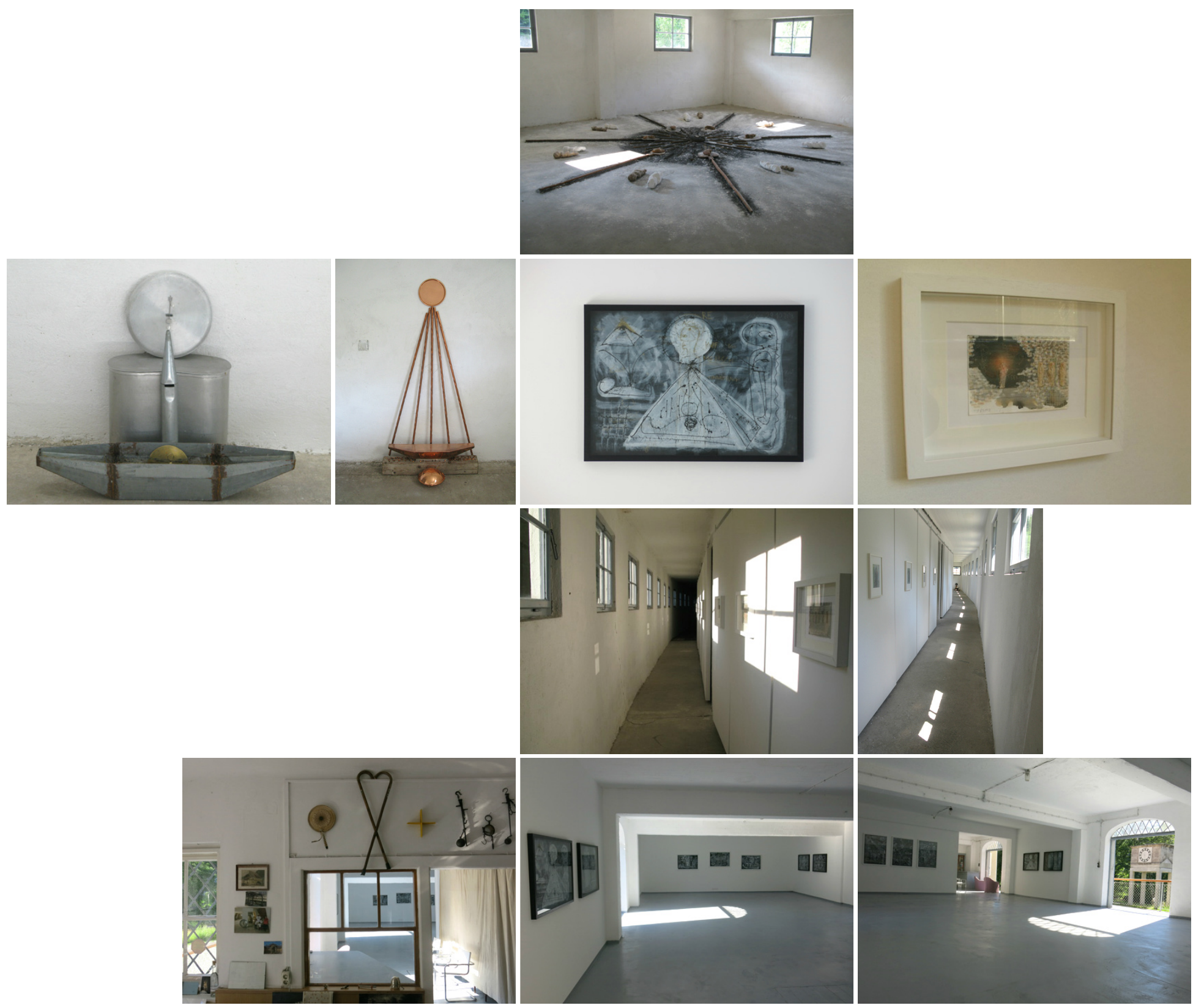


Die Station



"Die Station" was built by soviet occupying forces in 1951 at the riverbank of the "Große Mühl". It was used as a storehouse for the peasant association and is a grand symbol for the agricultural work of former days. After World War II it played an important role in the reconstruction of the regional agriculture and the development and implementation of modern agricultural techniques. The area is in the hands of artists since 1999. Initially used by the artists Nick Treadwell and Joachim Eckl in a mutual way, "Die Station" developed to be a place of transformation. The HEIM.ART@-philosophy finds expression in several artistic interventions in a cosmopolitan way of working. The basic notion is dealing and appreciating the already existing potential of the region. Symbols provide an impetus and present landing sites for ideas. Rooted and far-fetched notions shall be charged with energy and woven in the environment. International artists of different genres are being invited. With the mixture of actors, painters, musicians, instrument makers, performance-artists, sculptors and visual artists something new shall be created. In connection with the family-run hotel "Mühltalhof" which is located just a few hundred metres downstream the "Große Mühl", "Die Station" is a creative place of encounter, exchange and dialogue today.





Biography



Biography



Joachim Eckl lives and works in Unternberg near Neufelden at the river "Große Mühl" which is situated in the Mühlviertel: An area steeped in history and of powerful nature. His ancestors were millers working in the "Berndlmühle" upstream in Aigen-Schlögl. Through generations the family obtained power and energy from the river "Große Mühl". At first the energy was used to grind grain in the mills, after that for generating power in the power station. In 1902 the great grandfather erected the first hydroelectric power station at the river "Große Mühl" to "bring light to town", as he said.

Joachim Eckl was born and brought up in 1962 in Haslach at the river "Große Mühl". The relation to his country and culture as well as the local particularities became really important for Eckl after his returning from an annual study visit in New York in 1989. His commitment and work is based on the conviction and knowledge that the achievements of the 20th century entailed progress but also an immoderate carelessness: For Eckl time has come to return something to the river and the region. He works as freelance artist under the label HEIM.ART® in "Der Station - Neufelden" as well as international projects.

After his studies of psychology in Austria and New York Eckl has been working over 20 years in various positions and roles in the art world. In parallel to the realization of over 100 of his own projects he was part of the implementation of the large-scale projects of Tony Cragg, Jeff Koons, Christo & Jean Claude and Klaus Rinke.

"Die Station - Neufelden", the former warehouse at the river „Große Mühl“ is now being used as an art location for over 10 years. Joachim Eckl's work is based on an extended understanding of art which is substantially inspired by Joseph Beuys' term of a social sculpture. Eckl generates impulses for social sculptures through creating jointly experiences. He regards himself as a „social engineer“. Water plays a central role in this work: Eckl understands and uses it as basic element of human interaction. His "river to river-project" currently brings together rivers and people from all over the world: This generates social warmth. In the years 2008/2009 he realised projects in Austria, the Czech Republic, Germany, Great Britain, Egypt, Zambia and Zimbabwe.

